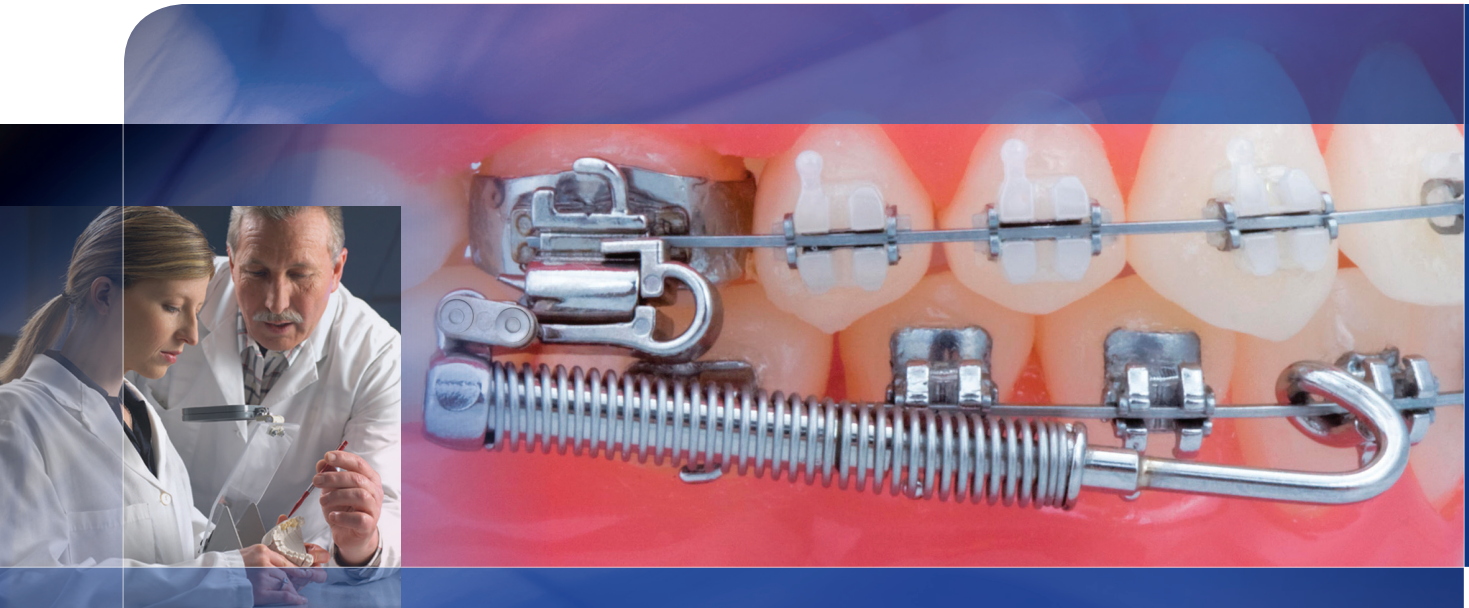


3M Science.
Applied to Life.™

Forsus™
Class II Correctors



Performance.
Endurance. Convenience.



An easier way to handle Class II Correction

Options for Class II treatment have traditionally presented a difficult choice. Until now, your choices were limited to fixed intraoral devices with known breakage concerns or other appliances—including headgear—that require patient compliance.

Now you have a more reliable, patient-friendly appliance for Class II correction. The Forsus™ Fatigue Resistant Device is a durable corrector that can be installed in one appointment and requires no patient compliance.

Simply attach the Forsus device to the upper molars and lower arch, creating a mesial force on the lower arch and a distal force on the upper arch. The long-lasting and consistent forces mean a more predictable outcome for your patients.



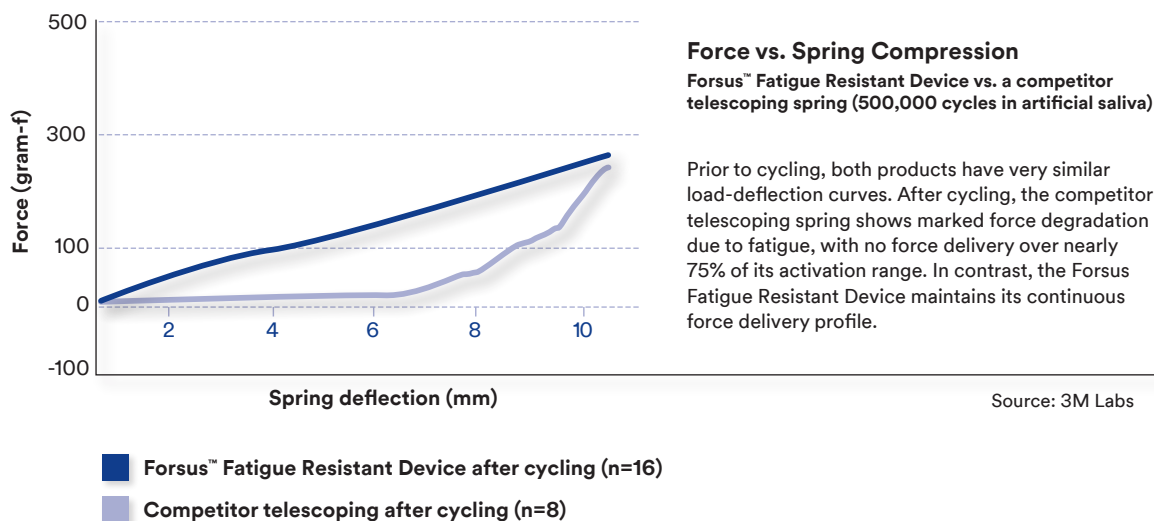
An optimum way to achieve results

Consider making a change from traditional Class II correction techniques to Forsus Class II Correctors, designed for patient comfort and efficient results without requiring patient compliance. Put the Forsus device to work for you and discover how it can force your productivity and patient satisfaction to new heights.

Fatigue resistance is essential to successful orthodontic outcomes. The Forsus Fatigue Resistant Device is designed to perform reliably throughout the course of treatment

Lab testing was performed equal to 6 months of treatment time. The chart below indicates that the performance of the Forsus appliance did not degrade over the time period.

Forsus™ Correctors are Fatigue Resistant

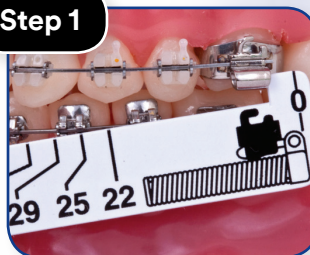


Easier installation

The Forsus Corrector is a study in efficiency that eliminates time-consuming laboratory setup. It is designed to be an “out of the box” appliance for easy chairside installation, with no bracket or archwire removal required. And now, the Forsus Fatigue Resistant Device EZ2 Module provides easy, consistent installation with an even more durable, reliable performance during treatment with less breakage.

Installation using the Forsus™ Fatigue Resis

Step 1



Step 2

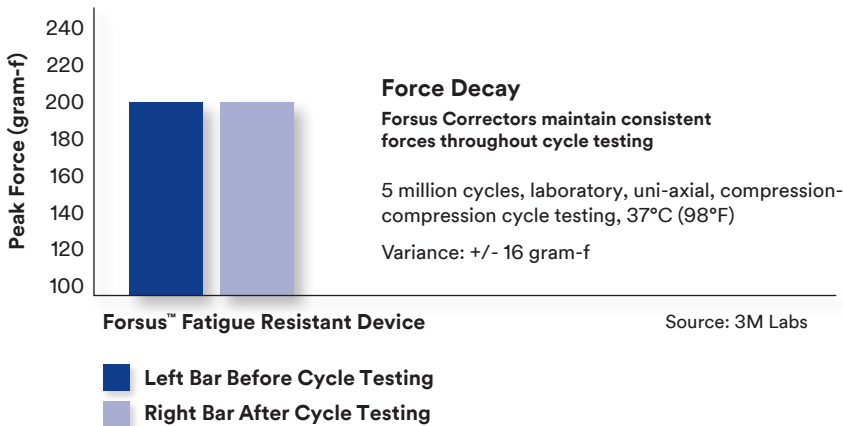


Effective Class II Correction

Forsus Correctors are designed to resist fatigue and work more consistently, longer. The unique coaxial spring design addresses the issue of fatigue failure, usually seen when springs and elastics get weaker the longer they have been installed. Features include:

- A simple one-step installation into the headgear tube
- A telescoping coaxial spring designed to allow for enhanced patient jaw opening
- A comfortable stainless steel mechanism that does not bow out into the cheek
- Low spring stresses to give the Forsus spring a longer, more fatigue-resistant life
- Open spring design to facilitate good oral hygiene
- One appointment installation, chairside, with no lab work required
- Independent left and right components; install only one side if desired

Forsus™ Correctors Maintain Consistent Force



“Lack of compliance on the part of the patient has always been the issue with headgear and elastics, but this is easily resolved by using the Forsus™ Appliance. Our patients also like it because it makes their job easy.”

— Paul Lingenbrink,
DPS, MPS,
Bremerton, WA



tant Device EZ2 Module

Step 3

Place the proper length of push rod onto the archwire.

Step 4

Crimp the push rod on the archwire and insert into the Forsus™ EZ2 Module.

Step 5

Installation is complete.



Effective and Efficient

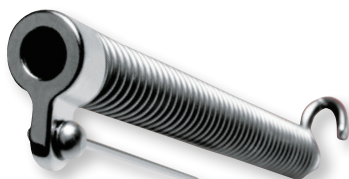
Comfortable and hygienic

Factors chosen to achieve the low spring stresses provide benefits beyond fatigue resistance. The compact size helps the patient feel less discomfort, and the open coil spring assembly design aids hygiene. Because the spring is reinforced by a telescoping cylinder, it does not bow outward when compressed. This linear motion of the spring minimizes discomfort and assists spring durability.

Innovative installation options

The Forsus™ Fatigue Resistant Device is designed to make installation a snap. Choose the EZ2 Module for simple, secure installation. Choose the L-pin Module for flexible, more mobile installation. With two modules, Forsus Correctors offer versatility that can be sure to meet any patient's specific needs.

The fewer steps,
the more efficient
you become



L-pin Module



EZ2 Module



“The Forsus™ Appliance is the most efficient, cost-effective method of correcting Class II malocclusions in our office. Since patient compliance is no longer a factor, I appreciate being able to more accurately predict treatment time and outcome.”

— *Lisa Alvetro,
DDS, MSP
Sidney, OH*



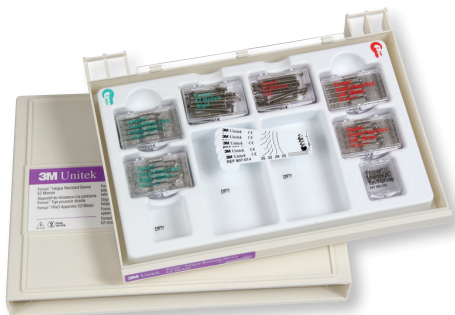


Description	Unit	Side	Part No.
Kits			
Forsus™ Fatigue Resistant Device EZ2 Module 20-Patient Kit	Kit		885-142
Forsus EZ2 Module 5-Patient Kit	Kit		885-141
L-Pin Module 5-Patient Kit	Kit		885-121
L-Pin Module 20-Patient Kit	Kit		885-122
Individual Components			
Forsus EZ2 Module Reorder Pack (Engagement clip and spring)	pkg/5	L	885-148
Forsus EZ2 Module Reorder Pack (Engagement clip and spring)	pkg/5	R	885-149
L-Pins	pkg/10		885-110
L-Pin Spring Modules	pkg/5		885-100
Direct Push Rod X-Short (22 mm)	pkg/5	L	885-009
Direct Push Rod X-Short (22 mm)	pkg/5	R	885-010
Direct Push Rod Short (25 mm)	pkg/5	L	885-111
Direct Push Rod Short (25 mm)	pkg/5	R	885-112
Direct Push Rod Medium (29 mm)	pkg/5	L	885-113
Direct Push Rod Medium (29 mm)	pkg/5	R	885-114
Direct Push Rod Large (32 mm)	pkg/5	L	885-115
Direct Push Rod Large (32 mm)	pkg/5	R	885-116
Direct Push Rod X-Large (35 mm)	pkg/5	L	885-117
Direct Push Rod X-Large (35 mm)	pkg/5	R	885-118
Direct Push Rod XX-Large (38 mm)	pkg/5	L	885-107
Direct Push Rod XX-Large (38 mm)	pkg/5	R	885-108
Universal Split Crimp	pkg/50		885-203
Measurement Guide	pkg/5		807-014

Kit Contents	5-Patient		20-Patient	
	L-Pin	EZ2 Module	L-Pin	EZ2 Module
Attachment				
Push Rods				
X-Short (22 mm)	–	1 L, 1 R	–	5 L, 5 R
Short (25 mm)	1 L, 1 R	1 L, 1 R	5 L, 5 R	5 L, 5 R
Medium (29 mm)	1 L, 1 R	2 L, 2 R	5 L, 5 R	5 L, 5 R
Large (32 mm)	2 L, 2 R	1 L, 1 R	5 L, 5 R	5 L, 5 R
XL (35 mm)	1 L, 1 R	–	5 L, 5 R	–
Auxiliaries				
Split Crimps	16	16	50	50
Measurement Guides	2	5	5	20
Modules				
L-Pins	16	–	50	–
L-Pin Modules	10	–	40	–
EZ2 Modules	–	5 L, 5 R	–	20 L, 20 R

For More Information, request any of the following information resource items from your 3M Sales Representative or visit 3M.com/ortho to view any of these:

- Forsus™ Fatigue Resistant Device EZ2 Module
- Forsus™ Fatigue Resistant Device with Direct Push Rod
- Forsus Fatigue Resistant Device 22 mm Push Rod FAQs
- Forsus Fatigue Resistant Device Technique Guide (CD)
- A compilation of Forsus™ Class II Corrector articles from *Orthodontic Perspectives* (request this item by name)
- Forsus Class II Correctors Patient Brochure
- Forsus Class II Correctors Important Patient Information (Checklist)



3M Oral Care
 2510 Conway Avenue
 St. Paul, MN 55144-1000 USA
 Phone 1-800-423-4588
 Web 3M.com/ortho

3M Canada
 Health Care Division
 300 Tartan Dr.
 London, ON N5V 4M9 Canada
 Phone 1-800-443-1661

3M and Forsus are trademarks of 3M.
 Used under license in Canada.
 © 3M 2016. All rights reserved.
 70-2021-3967-4 1601